

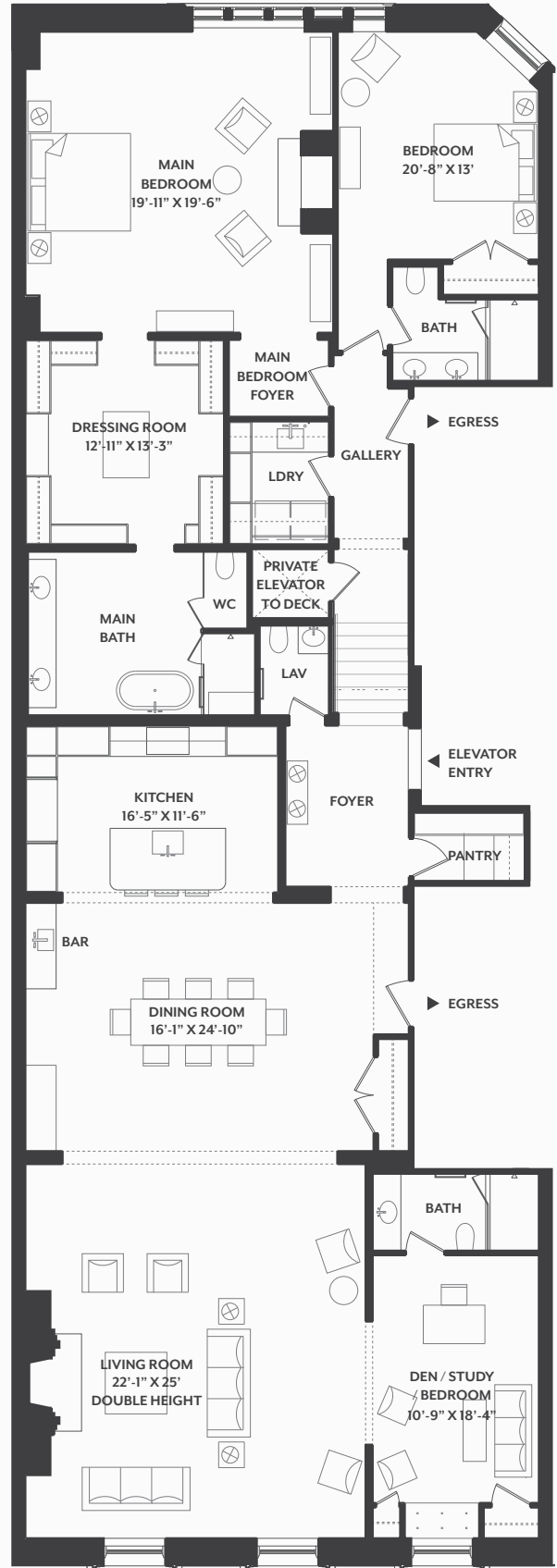
# RESIDENCE 5

3 BED | 3.5 BATH | 3260 SF

Residence Five elevates third-floor living with restored historic windows, elegant plasterwork, and a beautifully preserved original fireplace anchoring the grand living and dining rooms. A custom Corchia Arabescato marble kitchen and bar pair seamlessly with serene bedroom suites and spa-caliber baths. Private elevator access opens directly to the residence and its exclusive Ipe-decked roof terrace at the fifth level with full outdoor kitchen, fire pit, and sweeping Beacon Hill views—an exceptional urban sanctuary.



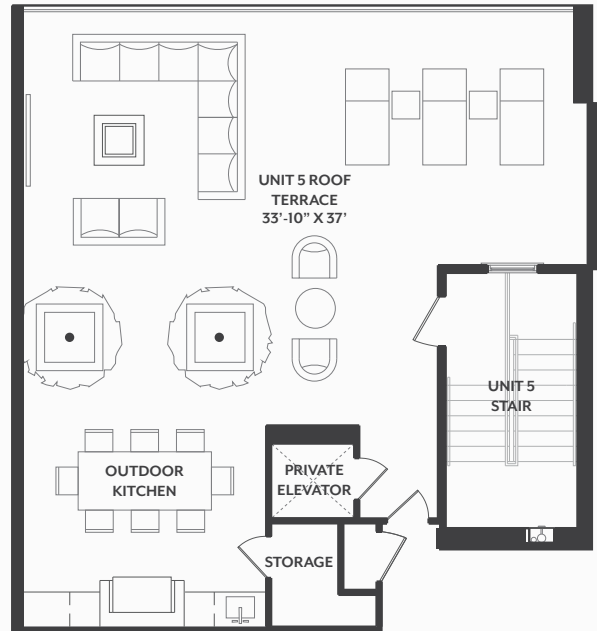
*Plans, dimensions and features shown are approximate and are subject to change without notice or obligation. Variations may occur depending, for example, on construction variances, location of unit and/or mechanical or structural requirements.*



# RESIDENCE 5

PRIVATE ROOF TERRACE  
AT FLOOR 5

3 BED | 3.5 BATH | 3260 SF



*Plans, dimensions and features shown are approximate and are subject to change without notice or obligation. Variations may occur depending, for example, on construction variances, location of unit and/or mechanical or structural requirements.*