

Jordan Mansion

BOSTON COMMON

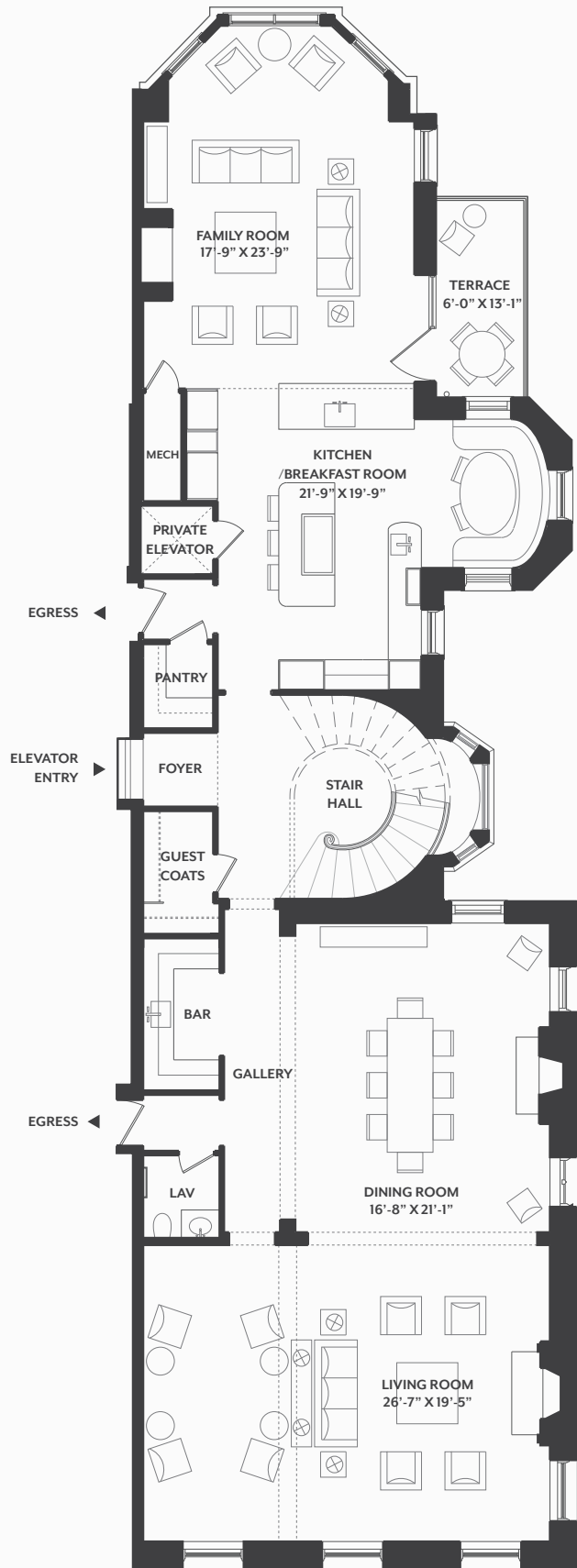
THE PENTHOUSE LEVEL ONE

3 BED | 5.5 BATH | 5740 SF

The Penthouse at The Jordan Mansion is a grand multi-level penthouse defined by chevron white-oak floors, refined plasterwork, and multiple statuary-marble fireplaces that anchor expansive living and dining rooms. A Corchia Arabescato marble kitchen with a Wolf professional rangetop, double ovens, and Sub-Zero refrigeration complements the adjacent family room and private terrace. At the upper level the residence boasts direct elevator access, luxe bedroom suites, a spacious study and dressing rooms, and spa-caliber baths. At the mezzanine level the private gym and game rooms and a fully outfitted roof deck with outdoor kitchen and fire pit enrich the elegance of this incomparable Beacon Hill home.



Plans, dimensions and features shown are approximate and are subject to change without notice or obligation. Variations may occur depending, for example, on construction variances, location of unit and/or mechanical or structural requirements.



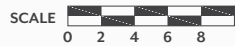
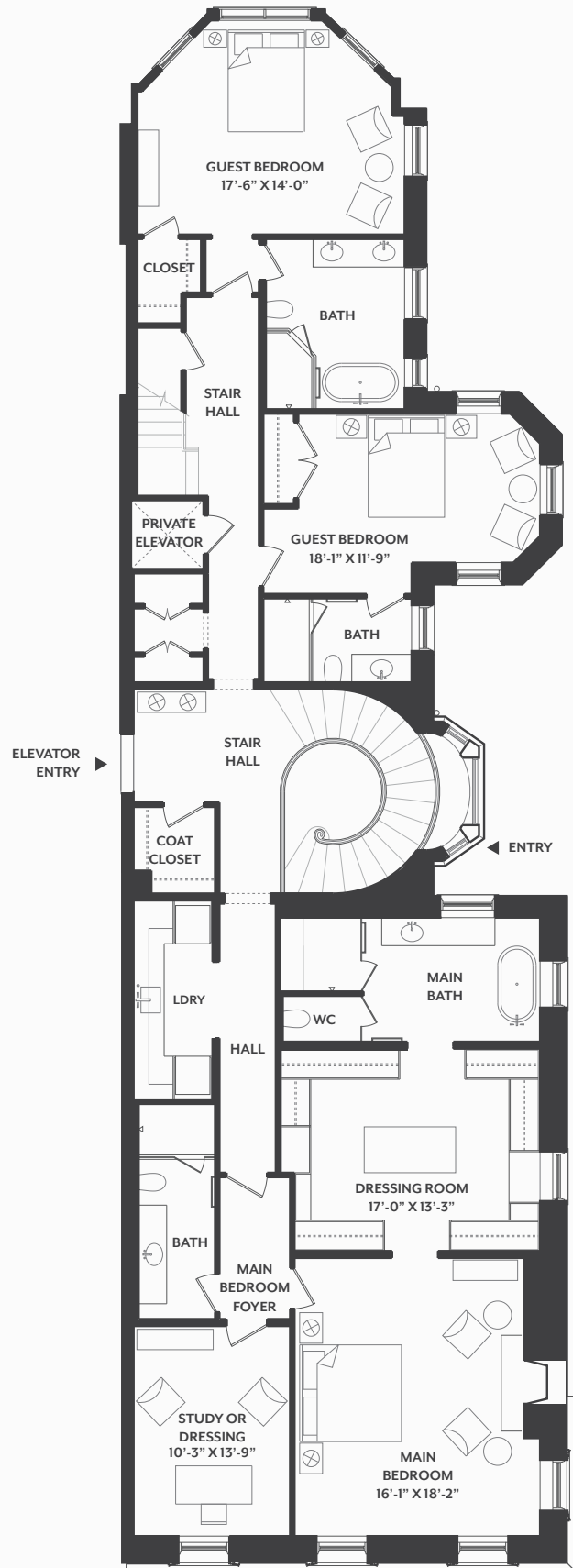
Jordan Mansion

BOSTON COMMON

THE PENTHOUSE

LEVEL TWO

3 BED | 5.5 BATH | 5740 SF

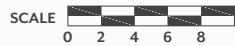


Plans, dimensions and features shown are approximate and are subject to change without notice or obligation. Variations may occur depending, for example, on construction variances, location of unit and/or mechanical or structural requirements.

THE PENTHOUSE

MEZZANINE/ROOF DECK

3 BED | 5.5 BATH | 5740 SF



Plans, dimensions and features shown are approximate and are subject to change without notice or obligation. Variations may occur depending, for example, on construction variances, location of unit and/or mechanical or structural requirements.

