

Jordan Mansion

BOSTON COMMON

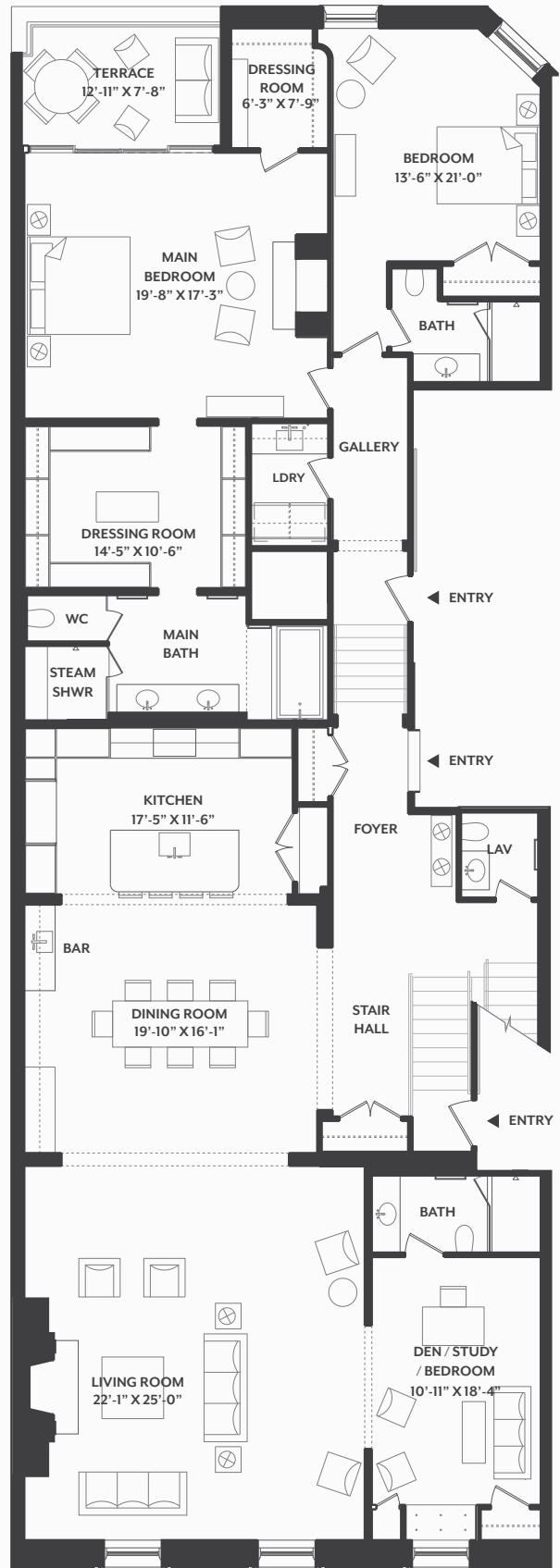
RESIDENCE 7

3 BED | 3.5 BATH | 3620 SF

Residence Seven offers soaring fourth-level living enriched by restored plasterwork, chevron oak floors, and an original stone-mantled fireplace that anchors the grand entertaining spaces. A Corchia Arabescato marble kitchen and bar highlight Sub-Zero, Wolf, and Dornbracht appointments, while a dramatic mezzanine with a custom skylight creates a luminous architectural moment. Luxe bedroom suites, refined marble baths, direct elevator access, and private outdoor terrace and roof deck elevate this exceptional Beacon Hill residence.



Plans, dimensions and features shown are approximate and are subject to change without notice or obligation. Variations may occur depending, for example, on construction variances, location of unit and/or mechanical or structural requirements.



Jordan Mansion

BOSTON COMMON

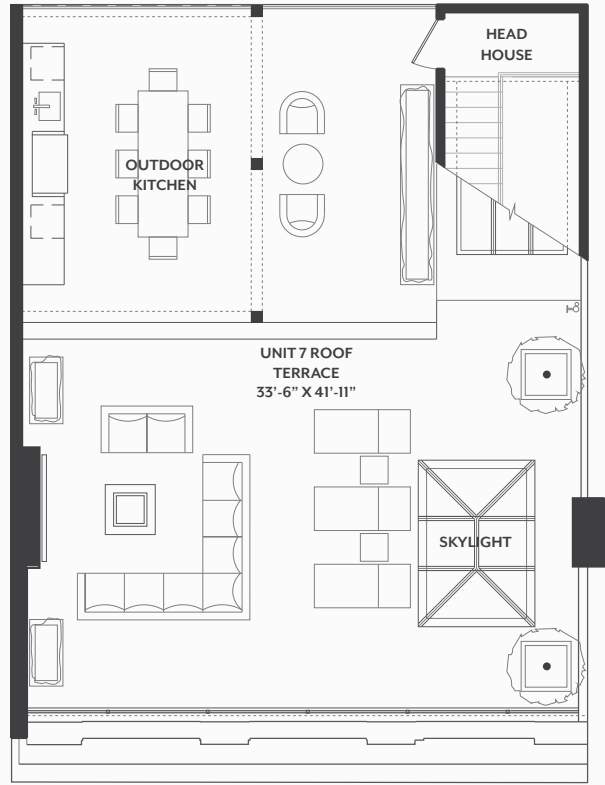
RESIDENCE 7

MEZZANINE & ROOF LEVELS

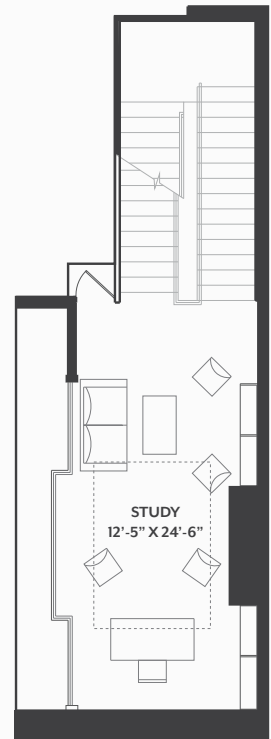
3 BED | 3.5 BATH | 3620 SF



Plans, dimensions and features shown are approximate and are subject to change without notice or obligation. Variations may occur depending, for example, on construction variances, location of unit and/or mechanical or structural requirements.



ROOF TERRACE LEVEL



MEZZANINE LEVEL